

R- 15

J.B.'s Reel

(2#)

1 2 3 4

5 6 7 8

8b

2

2 3 4

5 6 7 8 2- - -

1- - - Fin

Cabin Hunter

(1#)

Début (apr. J.B. reel)

5 6 7 8

Single

2

2 3 4

5 6 3 7 8

Single

DC

c) Bere Island

(2#)

1 2 3 4

5 6 7 8

2

2 3 4

5 6 7 8

R- 16

Golden Keyboard

Musical score for Golden Keyboard, measures 1-8. The piece is in D major (2 sharps) and 2/4 time. It consists of two systems of two staves each. The first system contains measures 1-4, and the second system contains measures 5-8. Chord progressions are indicated above the notes: Em, Em, Em, A7, D, Em, Em, Em, G, D, Em. Fingerings (1-4) and hand positions (LR) are marked. The piece ends with a double bar line and a repeat sign.

Mayor Harrisson Fedora

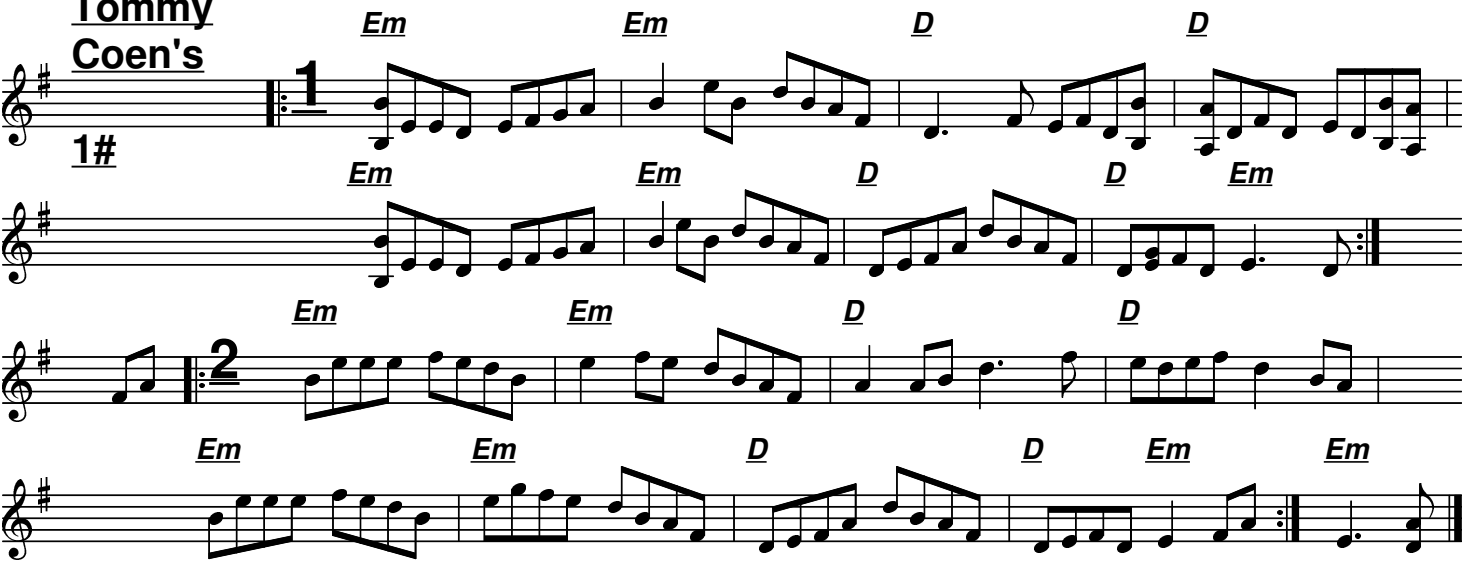
Musical score for Mayor Harrisson Fedora, measures 1-8. The piece is in D major (2 sharps) and 2/4 time. It consists of three systems of two staves each. The first system contains measures 1-4, the second system contains measures 5-8, and the third system contains measures 9-12. Chord progressions are indicated above the notes: Em, Em, D, D, Em, Em, Bm, Em, Em, Em, G, D, D, Em, Em, D, Em, D, Em, D, Em, G, Bm, D, D.C. Fingerings (1-4) and hand positions (LR) are marked. The piece ends with a double bar line and a repeat sign.

Four empty musical staves, each with a treble clef and a key signature of two sharps (D major).

R- 17

FrogStw Reels : 2° recueil p. 03 (G) [n° R- 15 à R- 30] de 26

Tommy Coen's



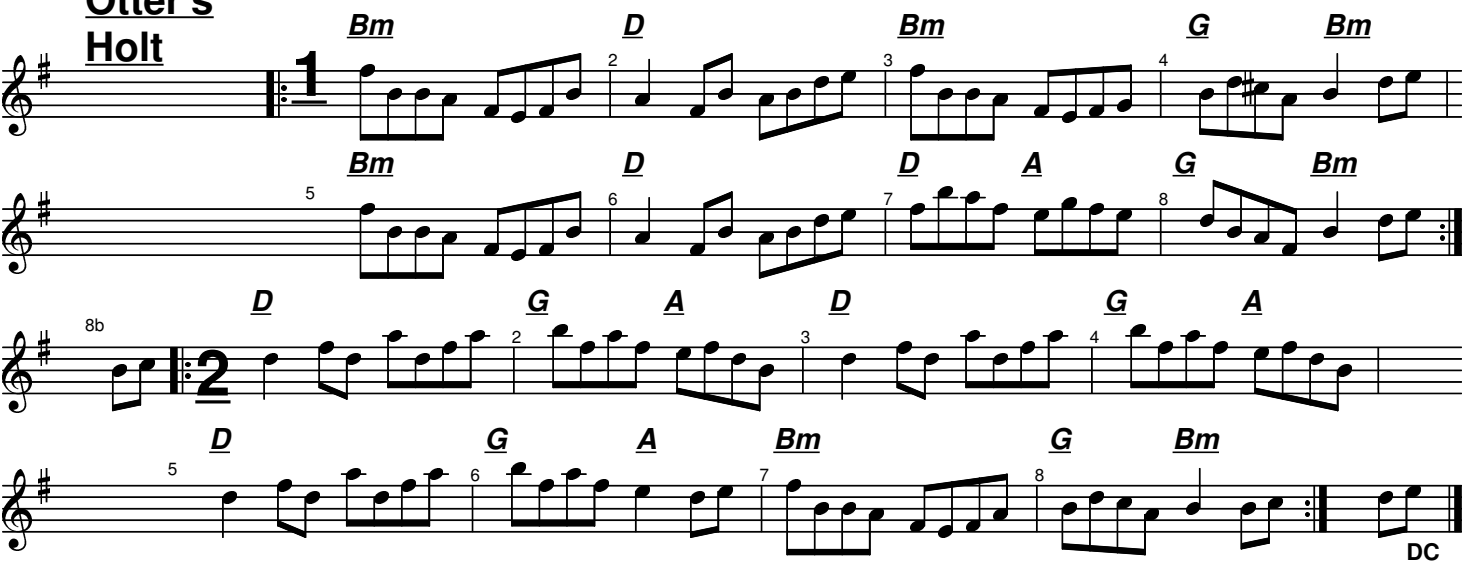
1#

Em D Em D Em D Em D

2

Em D Em D Em D Em D

Otter's Holt



1

Bm D Bm G Bm Bm D A G Bm

2

D G A D G A D G Bm G Bm

8b

5

DC

Skylark (+++)



1

Sceal Eile n 13 b (Gerry Harington Eoghan O'Sullivan)

Sligo 08 Gurteen

Pub "Teach ..." (Peter Horan)

2

2- - -

2- - - - -

R- 18

FrogStw Reels : 2° recueil p. 04 (D) [n° R- 15 à R- 30] de 26

Dunmore Lasses

(assez lent) ♩ = 96

1 2 3 4 5 6 7 8

John

Brosnan's

2# *Plus rapide*

1 2 3 4 5 6 7 8

ou bien Mac Donagh (p. 07) ou bien :

8b Bm Fin

(+++) Saint Anne's, 2#, Dmaj

DC

1 2 3 4 5 6 7 8

AMI-6 p. 18

Saint Anne's, 2#, Dmaj [2°, de 2]

AMI-6 p. 18

R- 19

FrogStw Reels : 2° recueil p.05 (G)

[n° R- 15 à R- 30]

de 26

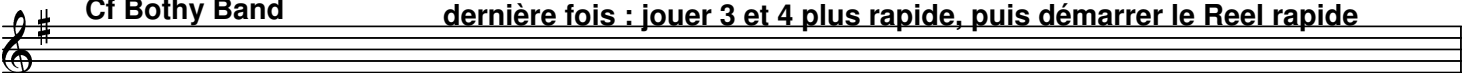
Suite :

"Ballintore Fancy"

NB : jouer l'un après l'autres les 4 thèmes du slow Reel, dont chacun n'a que 4 mesures x 2 (single)

Cf Bothy Band

dernière fois : jouer 3 et 4 plus rapide, puis démarrer le Reel rapide



A- Slow reel

Single

C Em C D G



à 2 voix
(+++)

1



Am C G Am 3 G G C



à 2 voix
(+++)

2



ensemble

Am Em Am 3 Em G C -2---



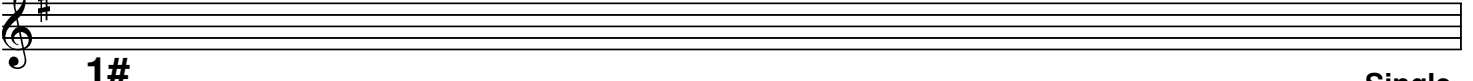
ensem-
ble
ou C

Am Em Am 3 Em G C -1----- Retour à 1



-2--- D.C.

B- Ballintore Fancy n° 2 (*), Single Reel



1# G G D7 G Am D7 Single -1----



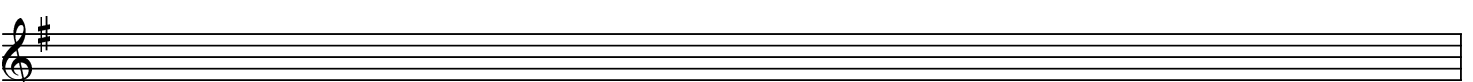
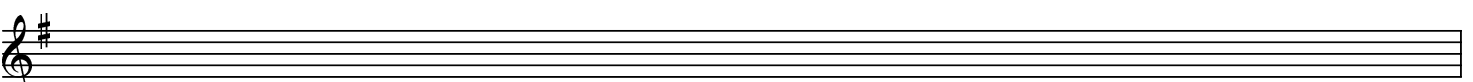
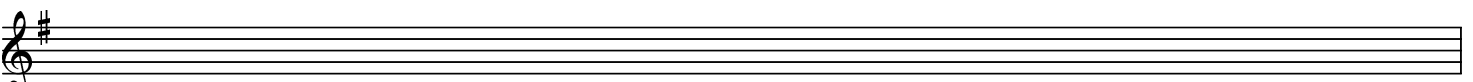
2 Em Em D Em C D7 -2---



5 Em Em D Em C D7 Single



D.C.

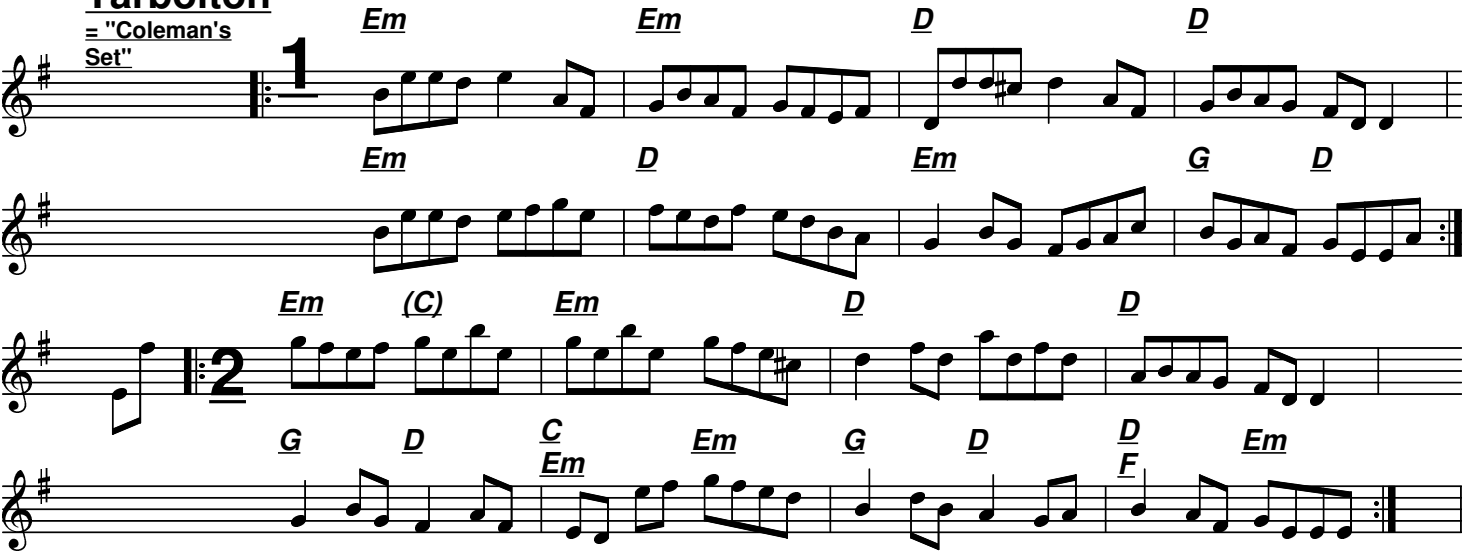


FrogStw Reels : 2° recueil p. 06 (D)
[n° R- 15 à R- 30] de 26

R- 20

Tarbolton

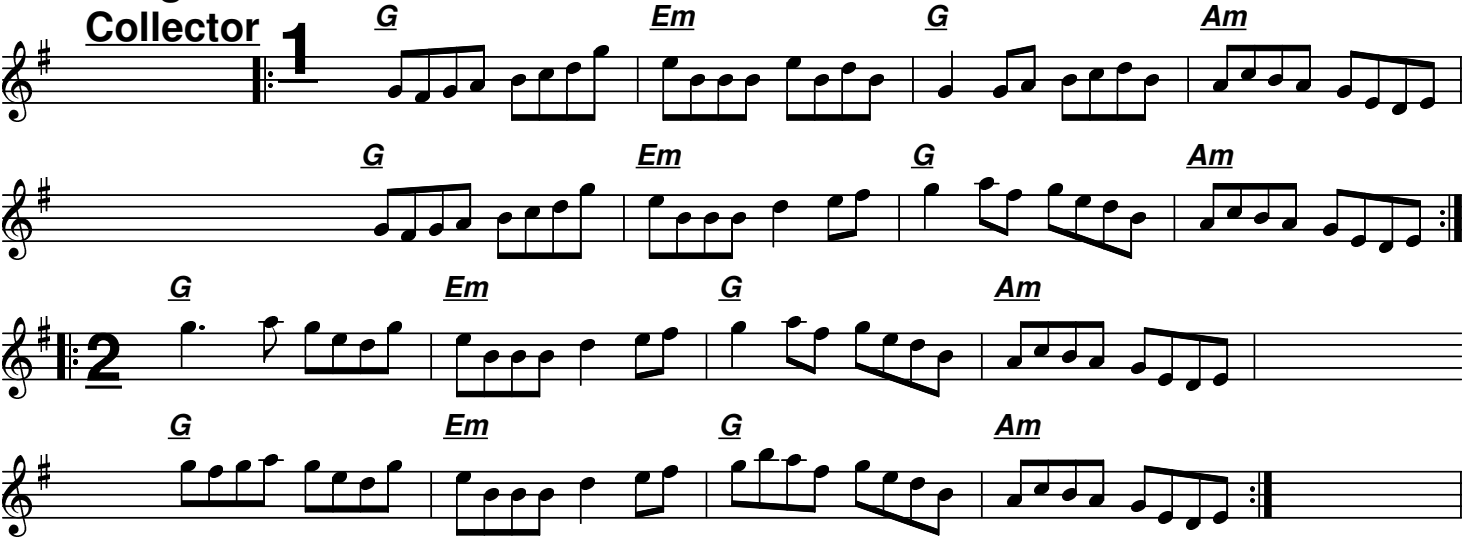
= "Coleman's Set"



Musical score for Tarbolton, consisting of two systems of two staves each. The first system is marked with a '1' and the second with a '2'. Chords are indicated above and below the notes. The key signature has one sharp (F#).

Chords: Em, D, Em, D, Em, G, D, Em, (C), Em, D, D, G, D, C/Em, Em, G, D, D/F, Em.

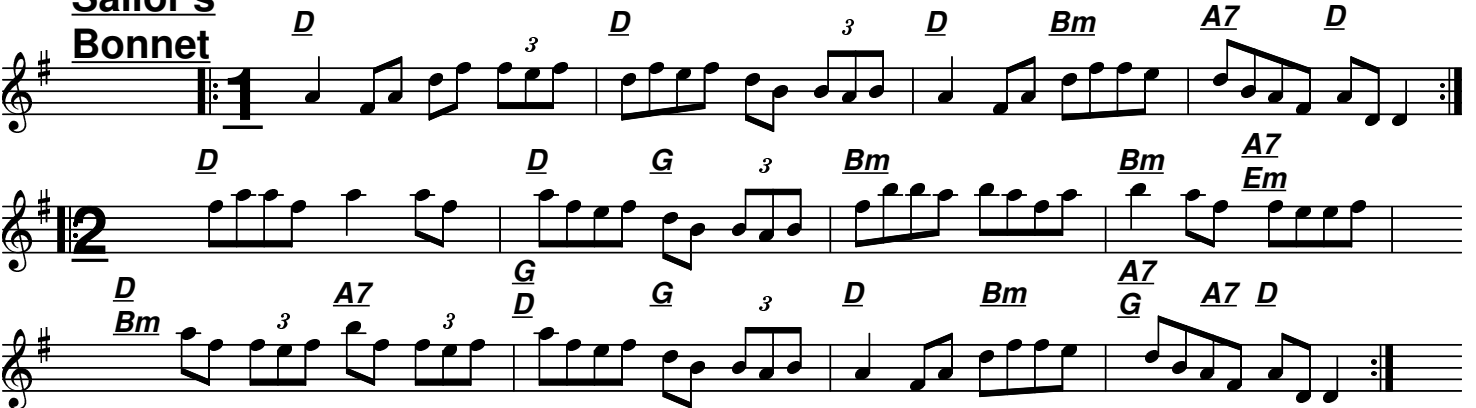
Longford Collector



Musical score for Longford Collector, consisting of two systems of two staves each. The first system is marked with a '1' and the second with a '2'. Chords are indicated above and below the notes. The key signature has one sharp (F#).

Chords: G, Em, G, Am, G, Em, G, Am, G, Em, G, Am, G, Em, G, Am.

Sailor's Bonnet



Musical score for Sailor's Bonnet, consisting of two systems of two staves each. The first system is marked with a '1' and the second with a '2'. Chords are indicated above and below the notes. The key signature has one sharp (F#). Triplet markings (3) are present over certain notes.

Chords: D, D, D, Bm, A7, D, D, D, G, Bm, Bm, A7, Em, D, Bm, A7, G, D, G, D, Bm, A7, G, A7, D.

R- 20b

Autumn

Child

Musical notation for 'Autumn Child' in G major, 1/4 time. The piece consists of two systems of two staves each. The first system starts with a treble clef, a key signature of one sharp (F#), and a tempo marking of ♩ = 92. It begins with a repeat sign and a first ending bracket labeled '1'. The melody is marked with fingerings 1, 2, 3, and 4. The second system continues with fingerings 5, 6, 7, and 8, ending with a double bar line and repeat dots. The second system also includes a '2' ending bracket and a 'DC' (Da Capo) marking at the end.

"Autumn Child" est suivi de : "Heaton Chapel", dans Lunasa (CD "Otherworld" n° 7)
mais on peut jouer

The Cat that Ate the Candle

Musical notation for 'The Cat that Ate the Candle' in G major, 1/4 time. It starts with a treble clef, a key signature of one sharp (F#), and a first ending bracket labeled '1'. The melody is marked with fingerings 1, 2, 3, and 4. The notation ends with a double bar line and repeat dots.

McDonagh's

Musical notation for 'McDonagh's' in G major, 1/4 time. The piece consists of two systems of two staves each. The first system starts with a treble clef, a key signature of one sharp (F#), and a first ending bracket labeled '1'. The tempo marking is 'CoroBri 06 p 3'. The melody is marked with fingerings 1, 2, 3, and 4. The second system continues with fingerings 5, 6, 7, and 8, ending with a double bar line and repeat dots. The second system also includes a '2' ending bracket. Chord symbols are provided above the notes: Em, Bm, D, (Bm), G, Bm, G, G, D, Bm, D, (G), A, Bm, A, (C), D, A, G, D.

R- 21

Copperplate (= New)

Musical score for 'Copperplate (= New)'. It consists of two systems of two staves each. The first system starts with a treble clef, a key signature of one sharp (F#), and a common time signature. The first measure is marked with a large '1' and a repeat sign. The melody is numbered 1 through 8. The second system starts with a treble clef, a key signature of one sharp, and a common time signature. The first measure is marked with a large '2' and a repeat sign. The melody is numbered 1 through 8. There are 'LR' markings above the first and third measures of the second system. The piece ends with a double bar line and a repeat sign, with '8b' and 'Fin' markings above the final measure.

Old Copper- plate

Musical score for 'Old Copper-plate'. It consists of two systems of two staves each. The first system starts with a treble clef, a key signature of one sharp (F#), and a common time signature. The first measure is marked with a large '1' and a repeat sign. The melody is numbered 1 through 8. The second system starts with a treble clef, a key signature of one sharp, and a common time signature. The first measure is marked with a large '2' and a repeat sign. The melody is numbered 1 through 8. There is a '(St)' marking above the seventh measure of the second system. The piece ends with a double bar line and a repeat sign.

Five empty musical staves, each with a treble clef and a key signature of one sharp (F#).

R- 22

**Moving
in Old
Decency**

Musical notation for 'Moving in Old Decency' in G major, 2/4 time. The piece consists of two systems of two staves each. The first system is marked with a '1' and contains measures 1-4. The second system is marked with a '2' and contains measures 5-8. Fingerings are indicated by numbers 1-5. The notation includes slurs, accents, and dynamic markings 'SR' and 'DC'. The piece ends with a repeat sign.

**Johnny
Cronin's**

Pas très loin
de Cotton Eye
Joe (2° reel)...

Musical notation for 'Johnny Cronin's' in G major, 2/4 time. The piece consists of three systems of two staves each. The first system is marked with a '1' and contains measures 1-4. The second system is marked with a '2' and contains measures 5-8. The third system is marked with a '3' and contains measures 9-12. Fingerings are indicated by numbers 1-5. The notation includes slurs, accents, and dynamic markings 'LR' and 'DC'. The piece ends with a repeat sign.

**Man
of Aran**

Jimmy Noonan

Musical notation for 'Man of Aran' in G major, 2/4 time. The piece consists of two systems of two staves each. The first system is marked with a '1' and contains measures 1-4. The second system is marked with a '2' and contains measures 5-8. Fingerings are indicated by numbers 1-5. The notation includes slurs, accents, and dynamic markings 'LR'. The piece ends with a repeat sign.

R- 23

FrogStw Reels : 2° recueil p. 11 (G) [n° R- 15 à R- 30] de 26

Trip to Durrow

Dble R.
2# $\text{♩} = 96$

Musical notation for the first system of 'Trip to Durrow'. It consists of two staves in G major (one sharp). The first staff begins with a double bar line, a repeat sign, and a first ending bracket labeled '1'. The melody consists of eighth and sixteenth notes with accents. The second staff continues the melody, ending with a double bar line and repeat sign.

NB On joue à la suite +++ " 2 " (16 mesures), puis " 3 " (16 mesures), puis on répète 2 + 3 !!

Musical notation for the second system of 'Trip to Durrow'. It starts with a double bar line, a repeat sign, and a first ending bracket labeled '2 = 2a'. The melody continues with eighth and sixteenth notes and accents. The second staff continues the melody, ending with a double bar line and repeat sign.

> > directe-
ment : 3 > >

NB On joue à la suite +++ " 2 " (16 mesures), puis " 3 " (16 mesures), puis on répète 2 + 3 !!

Musical notation for the third system of 'Trip to Durrow'. It starts with a double bar line, a repeat sign, and a first ending bracket labeled '3 = 2b'. The melody continues with eighth and sixteenth notes and accents. The second staff continues the melody, ending with a double bar line and repeat sign.

Reprise
de : (2 + 3)

D.C.

Mapple Leaf

Dble R.

1#

Musical notation for the first system of 'Mapple Leaf'. It consists of two staves in G major (one sharp). The first staff begins with a double bar line, a repeat sign, and a first ending bracket labeled '1'. The melody consists of eighth and sixteenth notes with accents. The second staff continues the melody, ending with a double bar line and repeat sign.

Musical notation for the second system of 'Mapple Leaf'. It starts with a double bar line, a repeat sign, and a first ending bracket labeled '2'. The melody continues with eighth and sixteenth notes and accents. The second staff continues the melody, ending with a double bar line and repeat sign.

R- 24

FrogStw Reels : 2° recueil p. 12 (D) [n° R- 15 à R- 30] de 16

Jackie
Coleman

(Letterkenny août 05)

Dble

DC

Merry Blacksmith (2#)

DC

(fa = noire)

"Tee"-Totaller (= Temperance)
(1#)

Teetotaller (1#) 1° de2

Idem

DC

Teetotaller (1#) 2° de2

FrogStw Reels : 2° recueil p. 13 (G) de 16

[n° R- 15 à R- 30]

Cat that Ate the Candle

Pas rapide (84-92)

Cat that Ate the Candle 1#, 1° de 2

AMI avr 06 -88

Chords: Em, D, A, G, (D), Em

Frankie Kennedy (Altan)

Cat that Ate the Candle (2° de 2)

Chords: GEm, Em, D, Em, D7, G, Em, Single

Moving 1° part | : Beed B2 ed | Beed B2 AG | FAdA FADA | FAdB AAFa |

ou Beed B2 ed (ou bien Be-e2 g2 ed) | Beed B2 AF | G2 GF GBdB | AGFG F4 |

plus rapide (92-100)

Moving in Old 2#

Decency

Chords: Em, Em, D, D

SR

Chords: Em, Em, G, D, Em

LR

Chords: Em, Em, D, D

LR

Chords: Em, Em, G, D, Em

LR, DC

Moving 2° part. | : e~e2f edBA | 3)Bcd ef G2 fe | dc^de dA~A2 | dAde fAdf | e~e2f edBA | 3)Bcd ef G2 fe | G2 GF GBdB | AGFG E4 :|5

aussi rapide (92-100)

Virginia

2#
Accds dans AMI

Chords: C, C, D, G, G, G7

Chords: C, C, D, G, G

Chords: G, C, D, G, C, D

Chords: Em, D, C, D

ré mi ?
fa (LR) mi ré fa ré si ?

R - 30

FrogStw Reels : 2° recueil p. 14 (D) [n° R- 15 à R- 30] de 16

Miss Sheppard pas facile pour les graves (flûtes, etc) suivre à l'octave



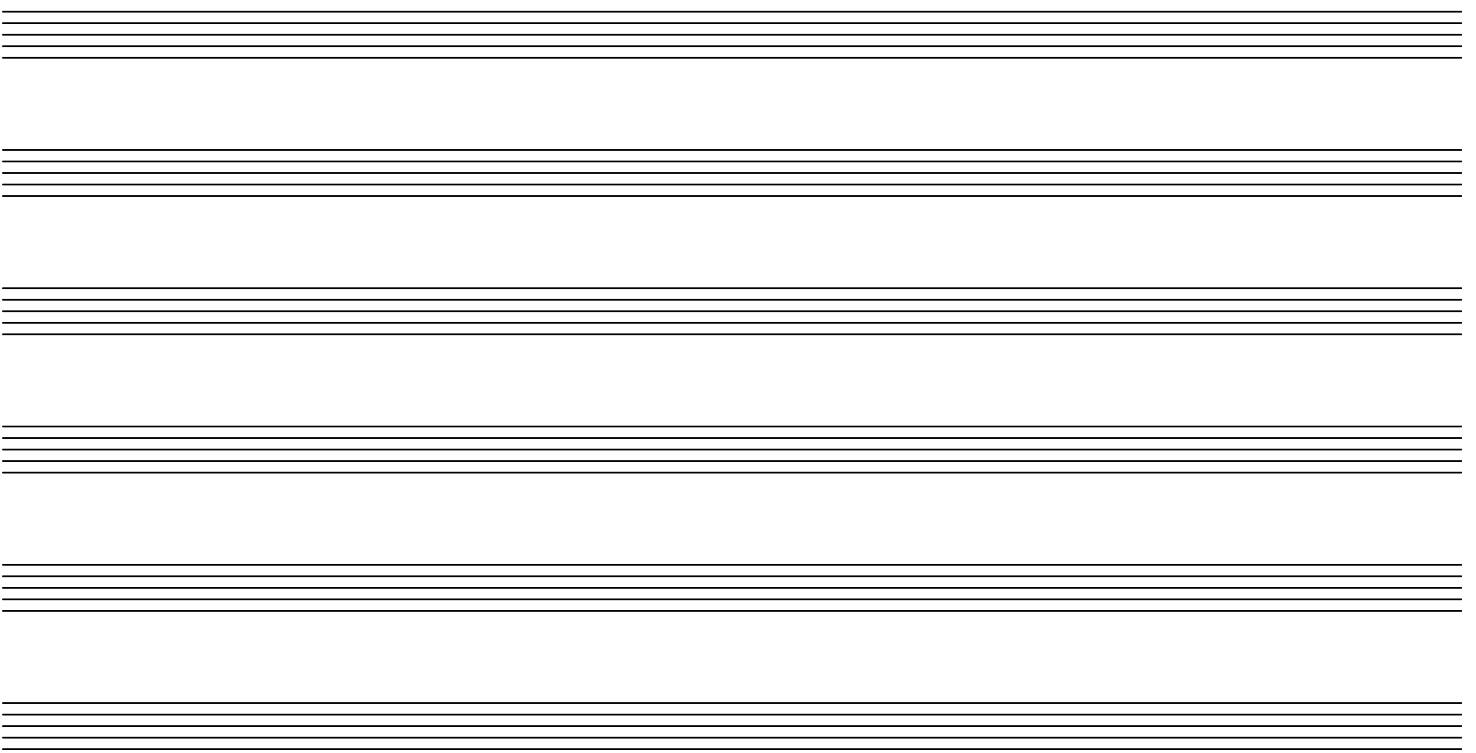
Musical score for "Miss Sheppard" in G major, 2/4 time. The score consists of three staves. The first staff begins with a first ending bracket labeled "1" and an "8" above it. The second staff continues the melody. The third staff begins with a second ending bracket labeled "2" and an "8" above it, ending with a double bar line and "D.C." (Da Capo) instruction.

Major Moles

Single



Musical score for "Major Moles" in G major, 2/4 time. The score consists of three staves. The first staff begins with a first ending bracket labeled "1" and a "Single" instruction. The second staff continues the melody. The third staff ends with a double bar line and "D.C. Single" (Da Capo Single) instruction.



Five sets of empty musical staves, each consisting of a treble clef staff and a bass clef staff, provided for additional notation or practice.