

"Froggy Stew" : Polkas Suites Pk- 01 à Pk- 10

Irish Trad.
(EG nov 87)

par Hervé Stève
mai 01

Polkas p. 01 (G)
(de 2)

Pk- 01

Queen's Polka

Musical score for Queen's Polka in G major, 2/4 time. The score consists of four staves. The first staff begins with a treble clef, a key signature of one sharp (F#), and a 2/4 time signature. A tempo marking of =140 is present. The piece starts with a first ending bracket labeled '1' over a series of eighth and sixteenth notes. The second staff continues the melody. The third staff features a second ending bracket labeled '2' over a different melodic line. The fourth staff concludes the piece with first and second ending brackets labeled '1' and '2' respectively, leading to a double bar line.

Egan's Polka

Egan's Polka

Musical score for Egan's Polka in G major, 2/4 time. The score consists of four staves. The first staff begins with a treble clef, a key signature of one sharp (F#), and a 2/4 time signature. The piece starts with a first ending bracket labeled '1' over a series of eighth and sixteenth notes. The second staff continues the melody. The third staff features a second ending bracket labeled '2' over a different melodic line. The fourth staff concludes the piece with a double bar line.

Sean (John) Ryan's

Polka

Sean (John) Ryan's Polka

Musical score for Sean (John) Ryan's Polka in G major, 2/4 time. The score consists of four staves. The first staff begins with a treble clef, a key signature of one sharp (F#), and a 2/4 time signature. The piece starts with a first ending bracket labeled '1' over a series of eighth and sixteenth notes. The second staff continues the melody, with lyrics 'tous si solo' and 'solo' written above the notes. The third staff features a second ending bracket labeled '2' over a different melodic line. The fourth staff concludes the piece with a double bar line and a 'DC' (Da Capo) instruction. The time signature changes to 2/4 at the end.

Polkas p. 02 (D)
(de 2)

Pk- 02
John O'Leary

Musical score for "John O'Leary n° 1" in D major, 2/4 time. The score consists of four staves. The first staff begins with a treble clef, a key signature of two sharps (D major), and a 2/4 time signature. A tempo marking "n° 1 (2#) = 140" is present. The music features a first ending marked "1" and a second ending marked "2". The piece concludes with a double bar line and repeat dots.

John O'Leary n° 2

Musical score for "John O'Leary n° 2" in D major, 2/4 time. The score consists of ten staves. The first staff begins with a treble clef, a key signature of two sharps (D major), and a 2/4 time signature. A tempo marking "(2#)" is present. The music features three distinct endings marked "1", "2", and "3". The piece concludes with a double bar line and repeat dots, followed by a "DC" (Da Capo) instruction. The final two staves are empty.

Pk- 03

**1- Maggie in
the Wood**

Musical notation for the first piece, 'Maggie in the Wood'. It consists of four staves in G major. The first staff begins with a first ending bracket labeled '1'. The second staff ends with a double bar line and repeat dots. The third staff begins with a second ending bracket labeled '2'. The fourth staff ends with a double bar line and repeat dots.

**2- Rakes of
Mallow**

Musical notation for the second piece, 'Rakes of Mallow'. It consists of four staves in G major. The first staff begins with a first ending bracket labeled '1'. The second staff ends with a double bar line and repeat dots, with a '-1 ----' marking above the final note. The third staff begins with a second ending bracket labeled '2'. The fourth staff ends with a double bar line and repeat dots, with a '-1 ----' marking above the final note. A fifth staff contains a few notes with a '-2 ----' marking above them and 'DC' below the staff.

3- Burching Birdking ?

Musical notation for the third piece, 'Burching Birdking ?'. It consists of four staves in G major. The first staff begins with a first ending bracket labeled '1' and a '- Fin ----' marking above the first few notes. The second staff ends with a double bar line and repeat dots, with the word 'Single' written above the staff. The third staff begins with a second ending bracket labeled '2'. The fourth staff ends with a double bar line and repeat dots, with the word 'Single' written above the staff.

Polkas p. 04 (D)
(de 2)

Pk- 04

a) Jim O'Keefe's

Musical score for 'Jim O'Keefe's' in D major, 2/4 time. The score consists of two systems of two staves each. The first system is marked with a first ending bracket (1) and contains the notes D4, E4, F#4, G4, A4, B4, C5, D5. The second system is marked with a second ending bracket (2) and contains the notes D4, E4, F#4, G4, A4, B4, C5, D5. Chords are indicated above the notes: D, D, G, A7, D, D, E, E, D, D, G, A7, D. Fingering numbers -1 and -2 are shown below the notes.

b) Ballyvournie

Musical score for 'Ballyvournie' in D major, 2/4 time. The score consists of two systems of two staves each. The first system is marked with a first ending bracket (1) and contains the notes E4, F#4, G4, A4, B4, C5, D5. The second system is marked with a second ending bracket (2) and contains the notes E4, F#4, G4, A4, B4, C5, D5. Chords are indicated above the notes: E, D, E, D, E, D, G, A7, D, D, D, A, D, D, D, G, A7. A triplet of G4, A4, B4 is marked with a '3' above it. Fingering numbers -1 and -2 are shown below the notes.

c) Johnnie Mickey's

Musical score for 'Johnnie Mickey's' in D major, 2/4 time. The score consists of two systems of two staves each. The first system is marked with a first ending bracket (1) and contains the notes A4, B4, C5, D5, E5, F#5, G5, A5. The second system is marked with a second ending bracket (2) and contains the notes A4, B4, C5, D5, E5, F#5, G5, A5. Chords are indicated above the notes: A, D, A, A, E7, A, A, A, D, E7, A, A, A, A, E7, A, D, E7. Fingering numbers -1 and -2 are shown below the notes.

Pk- 05

1) Bill Sullivan's

Musical score for 'Bill Sullivan's' in G major. It consists of two systems of two staves each. The first system starts with a first ending bracket labeled '1'. The second system starts with a second ending bracket labeled '2'. The piece concludes with a double bar line and a 'DC' (Da Capo) instruction.

2) Britches

**Fall of
stitches**

Musical score for 'Britches Fall of stitches' in G major. It consists of two systems of two staves each. The first system starts with a first ending bracket labeled '1'. The second system starts with a second ending bracket labeled '2'. The piece concludes with a double bar line.

3) Finnish

Polka

Musical score for 'Finnish Polka' in G major. It consists of two systems of two staves each. The first system starts with a first ending bracket labeled '1'. The second system starts with a second ending bracket labeled '2'. The piece concludes with a double bar line.

4) Jessica's

The image shows a musical score for a piece titled "4) Jessica's". The score is written in treble clef with a key signature of one sharp (F#). It consists of 13 staves. The first two staves contain the first ending, marked with a large "1" and a repeat sign. The next two staves contain the second ending, marked with a large "2" and a repeat sign. The remaining nine staves are empty, suggesting they are for other instruments or parts of the score.

Polkas p. 07 (G)
(de 2)

Pk- 06

**Farewell
to Whiskey**

$\text{♩} = 120$

1



**Dark Girl
Dressed
in Blue**

(1 = 2#)

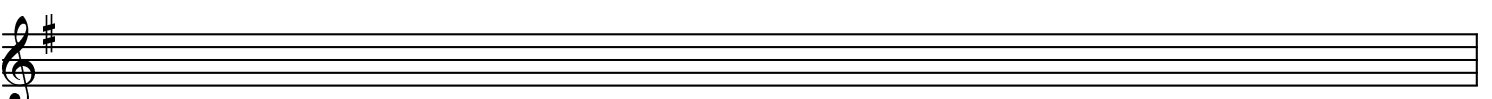
1



**Tripping to
the Well**

(1 = 2#)

1



Polkas p.08 (D) (de 2)

Ballydesmond

(n° 2)

Musical score for Ballydesmond (n° 2) in D major. The score consists of two systems of two staves each. The first system is marked with a first ending bracket and a '1' above it. The second system is marked with a second ending bracket and a '2' above it. The key signature is one sharp (F#). The first ending for both systems is Am G G. The second ending for the first system is Am Am G Em Am. The second ending for the second system is Am Am G Em Am. The piece concludes with a double bar line and repeat dots.

Ballyduf

1#

Musical score for Ballyduf in D major. The score consists of two systems of two staves each. The first system is marked with a first ending bracket and a '1' above it. The second system is marked with a second ending bracket and a '2' above it. The key signature is one sharp (F#). The first ending for both systems is Am C G G Em G. The second ending for the first system is Am C G Em G G. The second ending for the second system is Am Am G Em Am. The piece concludes with a double bar line and repeat dots.

Gulane's

1#

Musical score for Gulane's in D major. The score consists of two systems of two staves each. The first system is marked with a first ending bracket and a '1' above it. The second system is marked with a second ending bracket and a '2' above it. The key signature is one sharp (F#). The first ending for both systems is G G D7 Em7 G. The second ending for the first system is G G D7 Em7 G. The second ending for the second system is G C Em D7 D7 G. The piece concludes with a double bar line and repeat dots.

Polkas p. 09 (G) (de 2)

Dennis Murphy's

Musical notation for Dennis Murphy's, consisting of four staves in G major. The first staff begins with a first ending bracket labeled '1'. The second staff ends with a repeat sign. The third staff begins with a second ending bracket labeled '2'. The fourth staff ends with a repeat sign.

The Forty-Two Pounds Cheque

Musical notation for The Forty-Two Pounds Cheque, consisting of four staves in G major. The first staff begins with a first ending bracket labeled '1' and ends with a first ending bracket labeled '1a'. The second staff has accents (>) over notes and a first ending bracket labeled '1b'. The third staff begins with a second ending bracket labeled '2' and has accents (>) over notes. The fourth staff ends with a repeat sign.

Sean (= John) Ryan's (Bal du "Titanic")

Musical notation for Sean (= John) Ryan's (Bal du "Titanic"), consisting of four staves in G major, 4/8 time. The first staff begins with a first ending bracket labeled '1' and includes lyrics: [tous si solo] solo [tous si solo] solo. The second staff includes lyrics: [tous si solo] solo [tous si solo] solo. The third staff includes lyrics: [Toujours tous si solo] and a second ending bracket labeled '2'. The fourth staff includes lyrics: 2-..... DC. Chord symbols D, Bm, G, and A7 are placed above the notes. The piece ends with a 4/8 time signature and a repeat sign.

Polkas p. 10 (D) (de 2)

Maid of Arnagh

Musical notation for 'Maid of Arnagh' in G major, 2/4 time. It consists of four staves. The first staff starts with a first ending bracket labeled '1'. The second staff ends with a double bar line and repeat dots. The third staff starts with a second ending bracket labeled '2'. The fourth staff ends with a double bar line, repeat dots, and a fermata over a note with a '2-' below it, indicating a second ending.

Tom's Tavern

Tom's Tavern Polka (2#), 1°, de 2

Musical notation for 'Tom's Tavern' in G major, 2/4 time. It consists of four staves. The first staff starts with a first ending bracket labeled '1'. The second staff ends with a double bar line and repeat dots. The third staff starts with a second ending bracket labeled '2'. The fourth staff ends with a double bar line and repeat dots.

Tom's Tavern Polka (2#), 1°, de 2

Musical notation for 'Tom's Tavern Polka (2#), 1°, de 2' in G major, 2/4 time. It consists of four staves. The first staff starts with a second ending bracket labeled '2'. The second staff ends with a double bar line and repeat dots. The third staff ends with a double bar line and repeat dots. The fourth staff ends with a double bar line and repeat dots.

Sophie's

Sophie's Polka (2#), 1°, de 2

Musical notation for 'Sophie's' in G major, 2/4 time. It consists of four staves. The first staff starts with a first ending bracket labeled '1'. The second staff ends with a double bar line and repeat dots. The third staff starts with a second ending bracket labeled '2'. The fourth staff ends with a double bar line, repeat dots, and a fermata over a note with a '2-' below it, indicating a second ending.

Sophie's Polka (2#) 2°, de 2

ré avec L1 bouché
= cut

X:1 T:Sophie's Polka
M:2/4 L:1/8 R:Polka K:A

[:A>B ce | ae fa | A>B ce | fc ec]
A>B ce | ae fe | fa/f/ ec|1 BA A2:|2 BA AB|]

[:c>c cB | ce fe|c>c ce|c /B/A BA|
c>c cB | ce fe| a/f/ ec|1 BA AB:|2 BA A2|]

ne pas
supprimer
tant que pas

un nveau tune !